

JOB NOTES

GLAZING  
WINGS, REVOLVING DOOR  
GLAZE AT: JOB:  SHOP:   
GLASS BY: INT'L:  OTHERS:

WALLS, REVOLVING DOOR  
GLAZE AT JOB  
GLASS BY: INT'L:  OTHERS:

ELECTRIC WIRING AND FIXTURES TO BE FURNISHED BY OTHERS UNLESS SPECIFIED "BY INT'L" ON THIS DRAWING. RECESS IN FLOOR FOR FLOOR CHECKS, SPEED CONTROL, ETC., TO BE FURNISHED BY OTHERS.

NOTE: ACCESS TO SPACE ABOVE SPEED CONTROL MUST BE FURNISHED AND REMAIN AVAILABLE FOR SERVICE AND ADJUSTMENT. ACCESS TO THIS SPACE TO BE FURNISHED BY IRD. THRU REVOLVING DOOR CEILING.

NOTE: 110V. AC CURRENT REQUIRED FOR CEILING LIGHTS. ENTRANCE COMPONENTS WILL BE PREPARED AT FACTORY FOR PASSAGE OF WIRE. IF SOURCE AND/OR ROUTING IS VERIFIED ON APPROVED DRAWING. CEILING LIGHTS NOT BY IRD.

NOTE: NUMBER APPEARING IN O ARE FOR ERECTION ONLY. POSTS AND CEILING ARE MATCHMARKED IN SHOP.

NOTE: ALL STEEL REINFORCING TO BE COATED WITH RUST PROHIBITING PAINT.

NOTE: WINGS ARE EQUIPPED WITH EMERGENCY COLLAPSIBLE MECHANISM.

NOTE: CONNECTING WORK TO BE DESIGNED TO BRACE & HOLD REV. DOOR SECURELY IN POSITION.

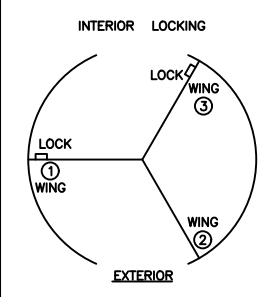
NOTE: THIS ORDER WILL NOT BE FABRICATED UNTIL: 1. SHOP DRAWINGS ARE RECEIVED MARKED "APPROVED FOR FABRICATION" BY THE GENERAL CONTRACTOR OR OTHER RESPONSIBLE PARTY. 2. FINISH SAMPLE IS RECEIVED MARKED "APPROVED". "APPROVED FOR DESIGN ONLY" DOES NOT CONSTITUTE SUFFICIENT APPROVAL TO ALLOW FABRICATION TO PROCEED.

INTERNATIONAL REVOLVING DOOR COMPANY WILL NOT BE RESPONSIBLE FOR VERIFICATION OF FIELD DIMENSIONS OR COORDINATION OF DRAWINGS AND DIMENSIONS OF WORK FURNISHED BY OTHER TRADES.

\* CYLINDERS TO BE STANDARD 1 5/32" DIAMETER, 1" LENGTH (5-PIN) WITH STANDARD CAMS. SIMILAR TO ILCU UNICAN #B-7185-YA-1-KAZ. LONGER CYLINDERS WILL REQUIRE SPACING COLLARS.

LOCK CYLINDERS \*

STANDARD:  MASTER KEYED:   
BY INT'L:  BY OTHERS:



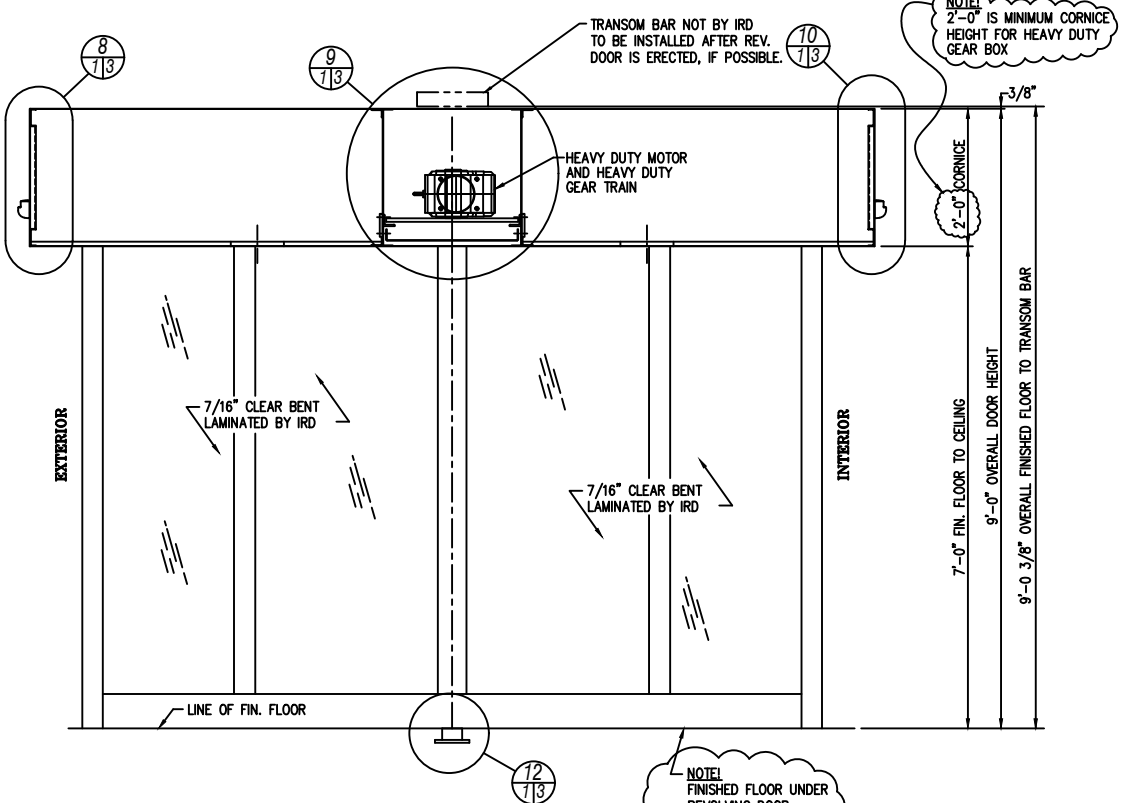
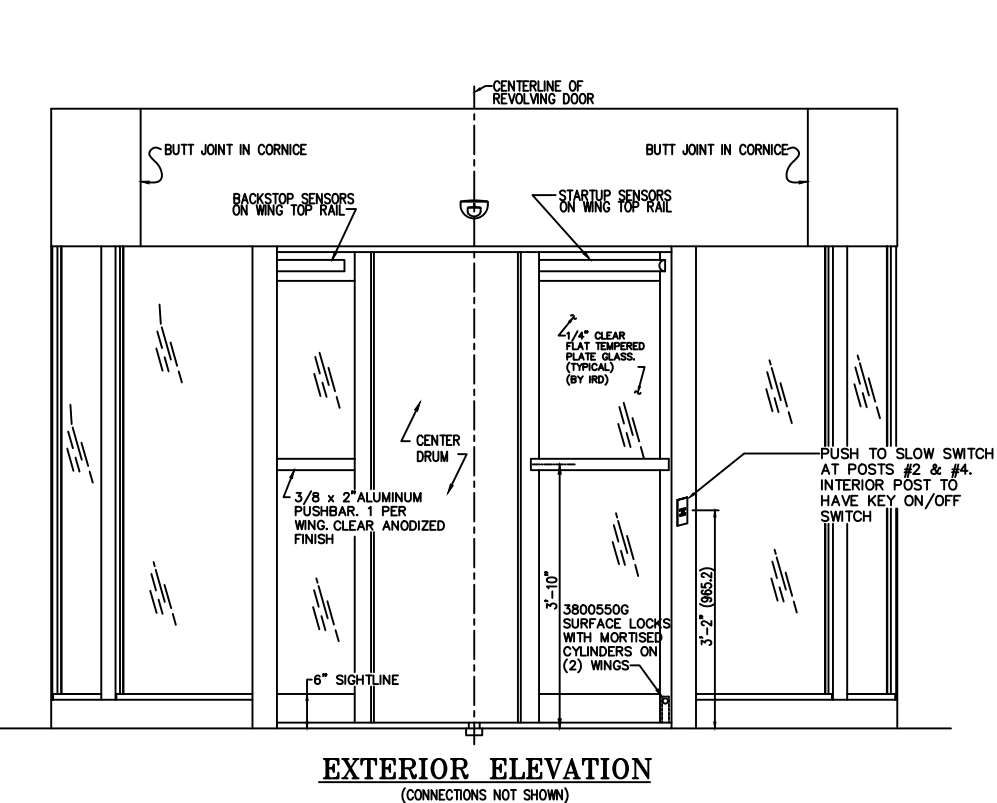
MARK WING NUMBERS AS SHOWN

(1) REVOLVING DOOR REQ'D PER THESE DETAILS

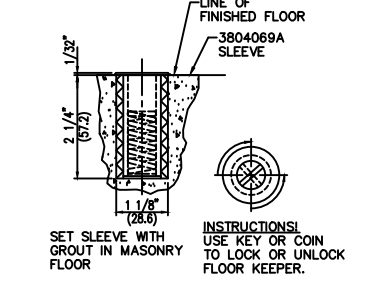
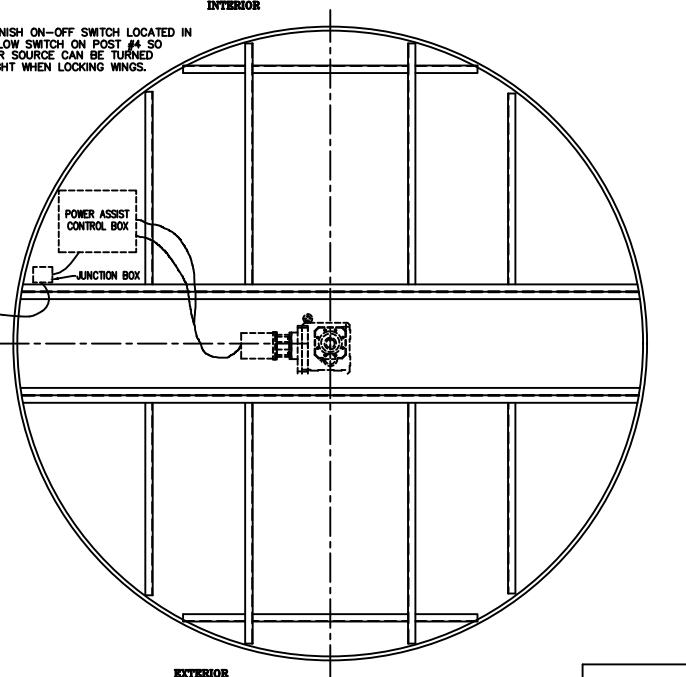
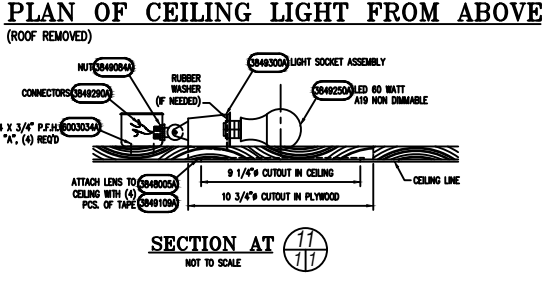
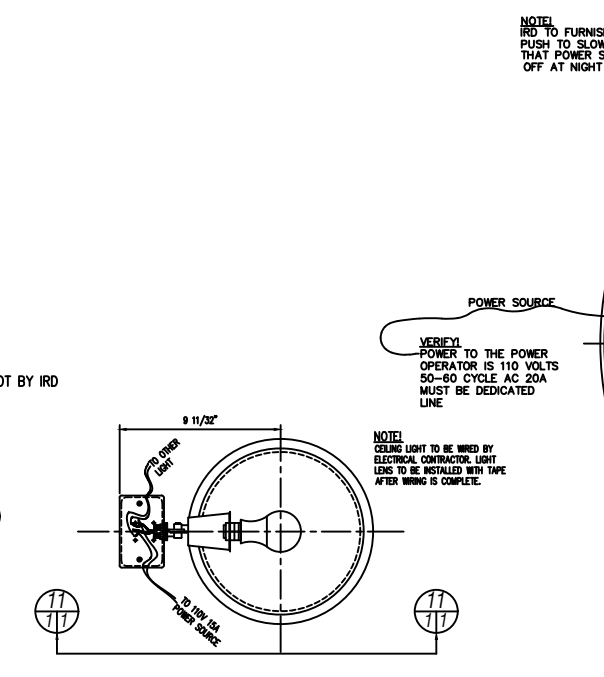
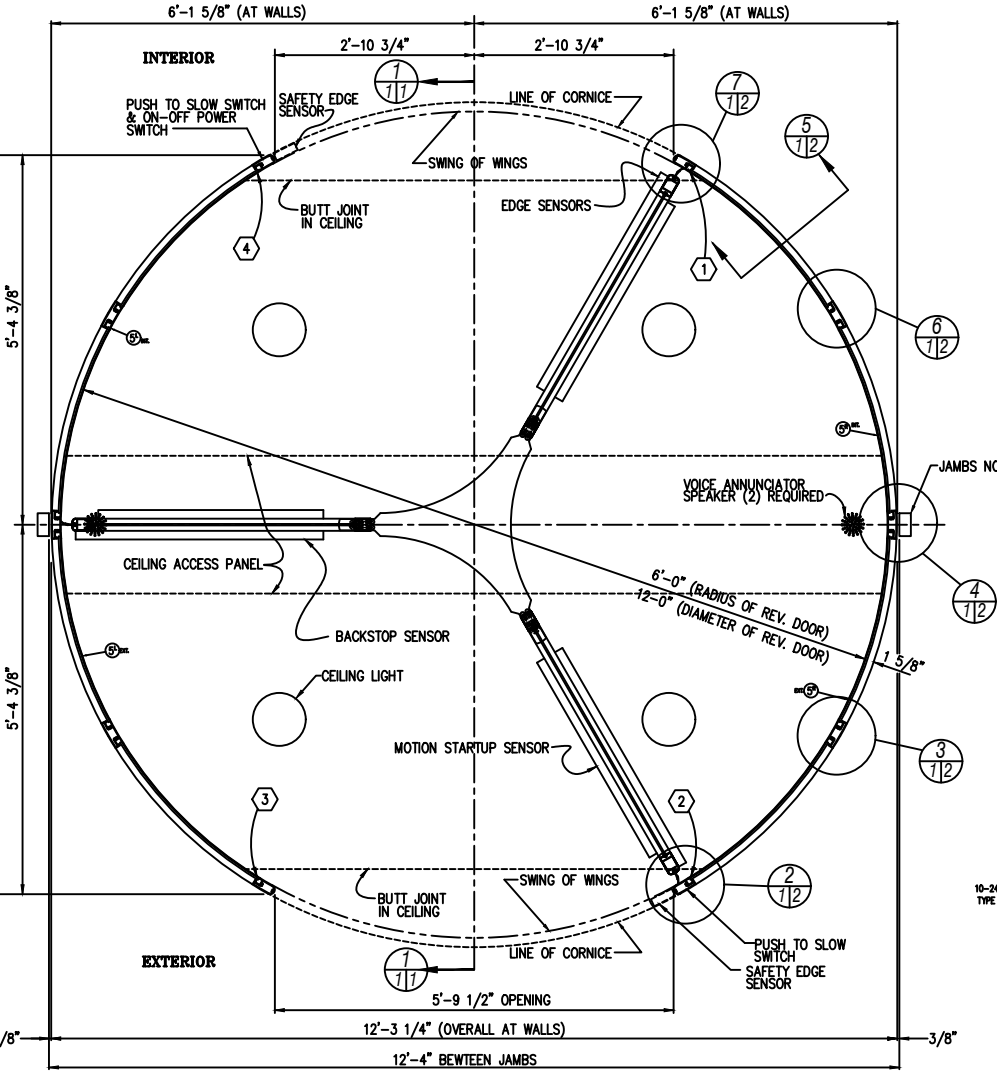
DATE	LOC. KEY	DESCRIPTION	BY		
REVISIONS					
WE ASSUME NO RESPONSIBILITY AS TO MEASUREMENTS OR DETAILS AFFECTING ANY WORK BUT OUR OWN AND ARE NOT RESPONSIBLE FOR ANY ERRORS OCCURRING THRU THE USE OF THIS DRAWING BY OTHER PARTIES.					
PRINTS ISSUED					
NO.	KEY	DATE	NO.	KEY	DATE
KEY EXPLANATION					
AP - APPROVAL	FA - FINAL APPROVAL	DB - DISTRIBUTION	S.I. - SHOP INSPECTION	ER - ERECTION	RT - REQUEST
R.R. - REPR. REFERENCE					

ERECTION PROCEDURES

- Inspect area where door is to be erected, floor must be level and flat.
- Construct the centerlines and inside radius of the door on the floor. Refer to installation manual.
- Set enclosure walls *PER* & *PER* in place. Verify that walls are to correct radius by comparing to floor layout.
- Mark floor for dowel locations.
- Remove walls, drill floor for dowels.
- Place ceiling sections #6 exterior and #6 interior into position on floor, and bolt together.
- Raise ceiling assembly high enough to clear top of walls.
- Replace walls, to position, plumb and level and dowel to the floor.
- Lower ceiling onto walls and secure to walls. Recheck plumb and level and secure to adjacent work. Access to wall bolts thru ceiling access panel.
- Attach canopy sections #8 & #9.
- Install top bearing & channel assembly in the ceiling. If not pre-installed.
- Extend a plumb line from the center of the bearing down to the floor, adjust bearing channel assembly to bring plumb bob to center of layout lines on the floor. Check radius of walls to plumb line, secure bearing channel assembly to joist.
- Set floor pivot base in exact center of door, level with leveling screws, top of pivot base to be level at 3/8" above the finished floor. Fill recess with quick setting cement.
- Remove a panel from drum assembly to access bottom bearing and top plate.
- Remove the top stubshaft from center drum assembly.
- Install floor stub shaft with key.
- Place two washers (1/16" thick) onto stubshaft.
- Install top stubshaft thru top plate and thru bearing in ceiling and secure to top plate.
- Install bottom bearing, check clearance distance between top plate and ceiling and bottom plate and floor. (should be 1/2"). If this is not so, remove bottom bearing and remove or add shim washers to achieve equal space at top and bottom.
- Install speed control support angles, if not preinstalled.
- Refer to speed control owners manual for installation of speed control.
- Thread wiring cable thru slip ring down thru hole in top stub shaft.
- Attach wires from slip ring to terminals on TB6 in top of drum.
- Attach previously removed drum panel.
- Install wings (they are match marked to center drum for location) locate wing at center drum at 90 degrees to normal position in order to access pivot pin set screws in back side of wing.
- Connect wires coming from junction box on motor to ORBITER control box.
- Connect wires from voice annunciators to ORBITER control box. See ORBITER manual for hook up.
- Connect wires from wallpost safety edge switches to ORBITER control box. See ORBITER manual for hook up.
- Door is ready for manual operation only.
- Electrical wiring to be done by electrical contractor.
- Ceiling lights to be done by electrical contractor.
- Glaze walls. (See instruction sheet.)
- Install lockkeepers. (see sheet #1).
- Attach roof sections and seal.



SECTION AT 1/11



FLOOR KEEPER #3804122G  
HEEL AND DUST PROOF

INTERNATIONAL REVOLVING DOOR COMPANY  
**IRD GROUP, INC.**  
2126 N. SIXTH AVENUE, EVANSVILLE, INDIANA 47710-2895  
PH: 812-428-3311 FAX: 812-428-2885 TEL: 800-745-4726  
E-MAIL: IRL@INTERNATIONALREVOLVINGDOOR.COM WWW.IRDGROUP.COM

JOB: 12' 3-WING ALUMINUM JUPITER  
LOCATION:

ENTRANCE:  
ARCHITECT:

MATERIAL:  
WINGS & CENTER SPINDLE-- .063 ALUMINUM  
WALLS-- EXTRUDED & .063 ALUMINUM  
CEILING-- .063 ALUMINUM  
ROOF-- .063 ALUMINUM  
FINISH--

THIS DRAWING IN DESIGN AND DETAIL IS THE PROPERTY OF THE INTERNATIONAL REVOLVING DOOR COMPANY OF EVANSVILLE, INDIANA AND MUST NOT BE SHOWN, COPIED, REPRODUCED, LOANED OR OTHERWISE DISPOSED OF DIRECTLY OR INDIRECTLY, AND SHALL BE USED ONLY IN CONNECTION WITH ESTIMATES AND WORK OF THIS COMPANY. ALL RIGHTS OF INVENTION ARE RESERVED. THIS DRAWING MUST BE RETURNED WHEN REQUESTED.

DRAWN: <i>JJD</i>	DATE: -	DOOR NO: -
CHECKED: -	DATE: -	DRAWING NO: -
SCALE: 3/4"=1'-0"		
SHEET 1 OF 1		ORDER NO: REFERENCE