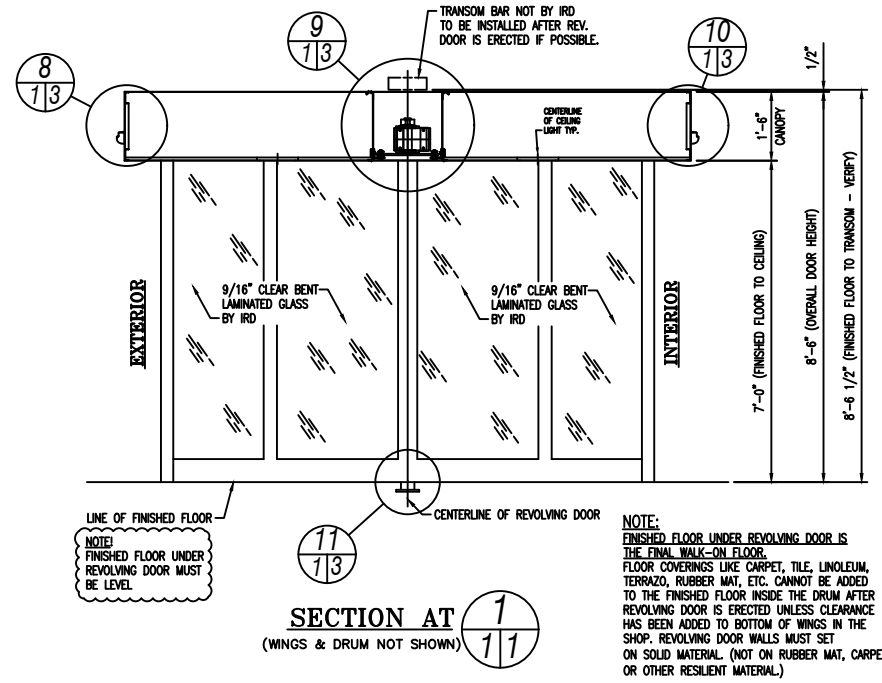


**EXTERIOR ELEVATION**  
CONNECTIONS NOT SHOWN



FOR REFERENCE ONLY

- ERECTION PROCEDURE**
- INSPECT AREA WHERE DOOR IS TO BE ERECTED, FLOOR MUST BE LEVEL AND FLAT.
  - CONSTRUCT THE CENTERLINES AND INSIDE RADIUS OF THE DOOR ON THE FLOOR. REFER TO INSTALLATION MANUAL.
  - SET ENCLOSURE WALLS, (1) 5A AND (1) 5B WALL SECTIONS PER SIDE, IN PLACE. BOLT TOGETHER AT CENTER, PLUMB, AND LEVEL. VERIFY THAT THE WALLS ARE TO THE CORRECT RADIUS BY COMPARING TO FLOOR LAYOUT.
  - MARK FLOOR FOR DOWEL LOCATIONS.
  - REMOVE WALLS, DRILL (8) 3/4" x 1 1/2" DEEP HOLES FOR FLOOR DOWELS.
  - PLACE CEILING SECTIONS #6 EXTERIOR, #6 CENTER, AND #6 INTERIOR INTO POSITION ON FLOOR AND BOLT TOGETHER.
  - RAISE CEILING ASSEMBLY HIGH ENOUGH TO CLEAR TOP OF WALLS
  - FILL DOWEL HOLES IN FLOOR WITH QUICK SETTING CEMENT. REPLACE WALLS INTO POSITION, PLUMB, LEVEL, AND DOWEL TO THE FLOOR BEFORE CEMENT SETS UP.
  - LOWER CEILING ONTO WALLS AND SECURE TO WALLS. RECHECK PLUMB AND LEVEL AND SECURE TO ADJACENT WORK. ACCESS TO WALL BOLTS THRU CEILING ACCESS PANEL.
  - INSTALL MOUNTING ANGLES TO JOIST. ATTACH LOOSELY 3/8" x 14" x 20" ALUM. PLATE TO ANGLES USING ISOLATOR MOUNTS. MOUNT SPEED CONTROL.
  - USING PLUMB BOB PLUG IN SPEED CONTROL SHAFT OPENING, ALIGN MOUNTING PLATE WITH CENTER OF DOOR INDICATED ON FLOOR LAYOUT. TIGHTEN MOUNTING PLATE DOWN. CHECK RADIUS OF WALLS TO PLUMB LINE.
  - CREATE (1) 7" SQUARE X 3" DEEP HOLE FOR FLOOR PIVOT. SET FLOOR PIVOT BASE IN HOLE IN EXACT CENTER OF DOOR. LEVEL WITH LEVELING SCREWS. TOP OF PIVOT BASE TO BE LEVEL AT 3/4" ABOVE THE FINISHED FLOOR. FILL RECESS WITH QUICK SETTING CEMENT.
  - REMOVE PLUMB LINE PLUG. SEE SPEED CONTROL SHEET (S7) FOR ASSEMBLY OF COMPONENTS.
  - INSTALL DRIVE ASSEMBLY (MINUS DRUM PLATE, PILOT, AND CARRIER ARM SUPPORT) INTO SPEED CONTROL AS FAR AS POSSIBLE AND HOLD.
  - REMOVE A PANEL FROM DRUM ASSEMBLY TO ACCESS TOP AND BOTTOM DRUM PLATE. MOVE DRUM INTO PLACE.
  - REMOVE BOTTOM BEARING.
  - INSTALL FLOOR STUB SHAFT WITH KEY.
  - PLACE (2) WASHERS (1/16" THICK) ONTO STUBSHAFT.
  - INSTALL BOTTOM BEARING. CHECK CLEARANCE DISTANCE BETWEEN BOTTOM DRUM PLATE AND FLOOR (IT SHOULD BE 1 1/2"). IF CLEARANCE IS NOT CORRECT, REMOVE BOTTOM BEARING AND REMOVE OR ADD SHIM WASHERS TO ACHIEVE 1 1/2".
  - LOWER DRIVE ASSEMBLY ONTO TOP DRUM PLATE. INSTALL PILOT BELOW DRUM PLATE. USE 1/2" DOWEL TO PROPERLY ALIGN SPIDER PLATE, STUB SHAFT, AND DRUM PLATE AND CONNECT PARTS.
  - ATTACH PREVIOUSLY REMOVED DRUM PANEL.
  - INSTALL WINGS (THEY ARE MATCH MARKED TO CENTER DRUM FOR LOCATION) LOCATE WING AT CENTER DRUM AT 90 DEGREES TO NORMAL POSITION IN ORDER TO ACCESS PIVOT PIN SET SCREW IN BACK SIDE OF WING AT BOTTOM.
  - REMOVE SHORT WEATHERSTRIPS ON TOP DRUM PLATE TO ACCESS HOLES TO DROP IN TOP PIVOT PIN. THEN, REATTACH THE WEATHERSTRIPS.
  - INSTALL CARRIER ARM ASSEMBLIES. SEE DRIVE ASSEMBLY SHEET (S6) FOR CARRIER ARM ATTACHMENT.
  - CONNECT CABLES FROM CONTROL BOX TO MOTOR, SPEAKERS, CARD READER, AND PRESSURE SENSITIVE FLOOR MATS.
  - GLAZE WALLS. (SEE INSTRUCTION SHEET.)
  - ATTACH ROOF SECTIONS AND SEAL.
  - GO THRU START-UP AND MAINTENANCE SECTION IN DOOR MANUAL.

**JOB NOTES**

**GLAZING**

WINGS, REVOLVING DOOR

GLAZE AT: JOB:  SHOP:

GLASS BY: INT'L:  OTHERS:

WALLS, REVOLVING DOOR

GLAZE AT JOB

GLASS BY: INT'L:  OTHERS:

ELECTRIC WIRING AND FIXTURES TO BE FURNISHED BY OTHERS UNLESS SPECIFIED "BY INT'L" ON THIS DRAWING. RECESS IN FLOOR FOR FLOOR CHECKS. SPEED CONTROL, ETC., TO BE FURNISHED BY OTHERS.

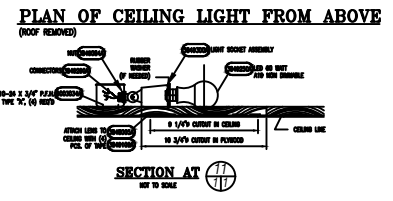
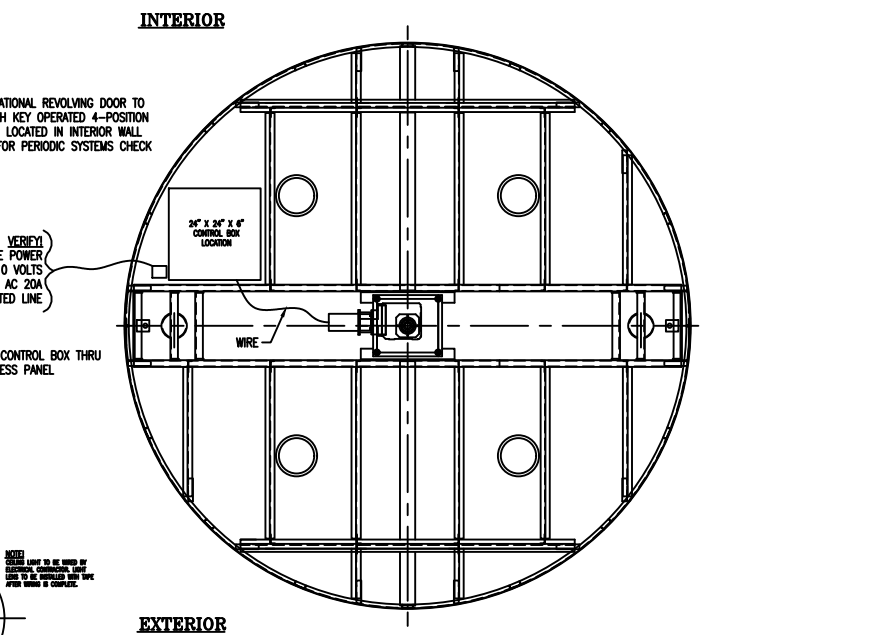
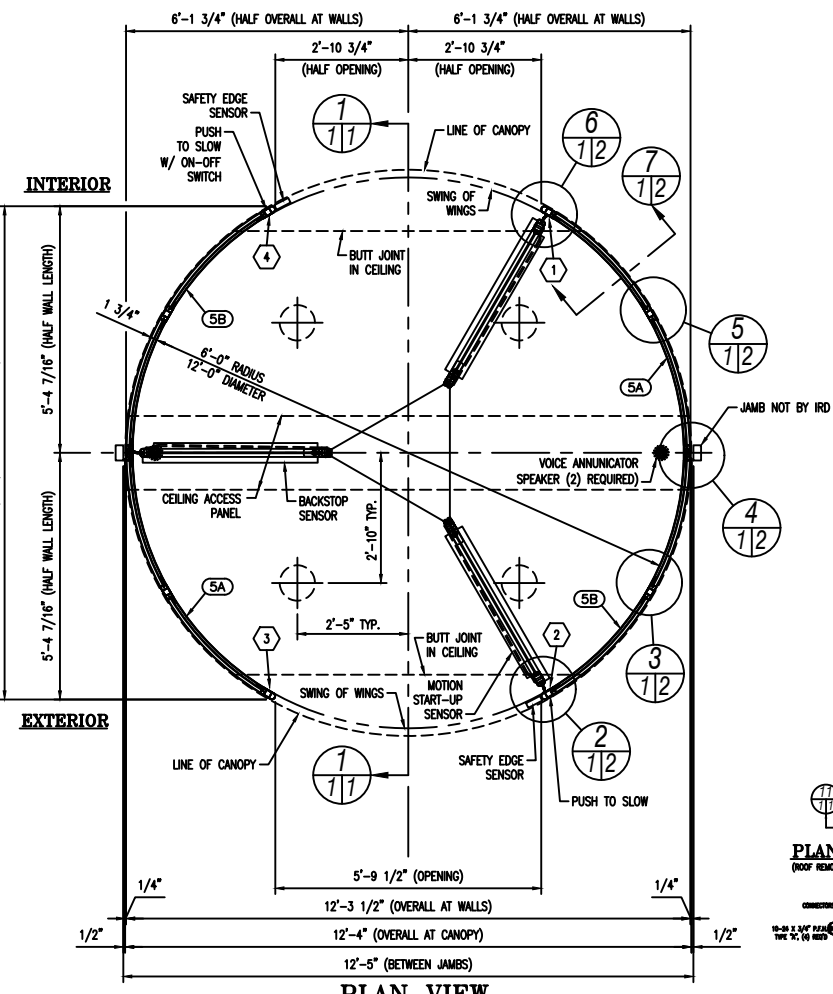
**LOCK CYLINDERS \***

STANDARD:  MASTER KEYED:

BY INT'L:  BY OTHERS:

INTERIOR LOCKING

MARK WING NUMBERS AS SHOWN  
(1) REV. DOOR PER THESE DETAILS



- NOTE**  
ACCESS TO SPACE ABOVE SPEED CONTROL MUST BE FURNISHED AND REMAIN AVAILABLE FOR SERVICE AND ADJUSTMENT. ACCESS TO THIS SPACE TO BE FURNISHED BY IRD THRU REVOLVING DOOR CEILING.
- NOTE**  
NUMBERS APPEARING IN THE ARE FOR ERECTION ONLY. POSTS AND CEILING ARE MATCHMARKED IN SHOP.
- NOTE**  
ALL STEEL REINFORCING TO BE COATED WITH RUST PROHIBITING PAINT.
- NOTE**  
WINGS ARE EQUIPPED WITH EMERGENCY COLLAPSIBLE MECHANISM.
- NOTE**  
CONNECTING WORK TO BE DESIGNED TO BRACE & HOLD REV. DOOR SECURELY IN POSITION.
- NOTE**  
THIS ORDER WILL NOT BE FABRICATED UNTIL:  
1. SHOP DRAWINGS ARE RECEIVED MARKED "APPROVED FOR FABRICATION" BY THE GENERAL CONTRACTOR OR OTHER RESPONSIBLE PARTY.  
2. FINISH SAMPLE IS RECEIVED MARKED "APPROVED".
- \*"APPROVED FOR DESIGN ONLY" DOES NOT CONSTITUTE SUFFICIENT APPROVAL TO ALLOW FABRICATION TO PROCEED.
- INTERNATIONAL REVOLVING DOOR COMPANY WILL NOT BE RESPONSIBLE FOR VERIFICATION OF FIELD DIMENSIONS OR COORDINATION OF DRAWINGS AND DIMENSIONS OF WORK FURNISHED BY OTHER TRADES.
- NOTE**  
REVOLVING DOOR IS NOT FREE STANDING AND REQUIRES TRANSOM BAR AND JAMBS TO STABILIZE AND HOLD REVOLVING DOOR PLUMB.  
(12'-0" x 7'-0" TALL)

**INTERNATIONAL REVOLVING DOOR COMPANY**  
**IRD GROUP, INC.**

2138 N. SOUTH AVENUE, EVANSVILLE, INDIANA 47710-2895  
PH: 812-422-3311 FAX: 812-422-3362 TEL: 800-745-4726  
EMAIL: INFO@ENTRANCE.COM WWW.INTLENTRANCE.COM

JOB: 12' 3 WING S/S JUPITER  
LOCATION: -  
CONTACT: -  
ENTRANCE: -  
ARCHITECT: -

**MATERIAL**

WINGS - .063" STAINLESS STEEL  
WALLS - .063" STAINLESS STEEL  
CEILING - .063" STAINLESS STEEL  
ROOF - .063" ALUMINUM - MILL FINISH

**DETAIL SYMBOL**

FINISH: #4 SATIN  
MODEL: JUPITER - 3-WING - AUTOMATIC

THIS CAD DRAWING IN DESIGN AND DETAIL IS THE PROPERTY OF THE INTERNATIONAL REVOLVING DOOR CO. OF EVANSVILLE, INDIANA AND MUST NOT BE SHOWN, COPIED, REPRODUCED, LOANED OR OTHERWISE DISPOSED OF DIRECTLY OR INDIRECTLY, AND SHALL BE USED ONLY IN CONNECTION WITH ESTIMATES AND WORK OF THIS COMPANY. ALL RIGHTS OF INVENTION ARE RESERVED. THIS DRAWING MUST BE RETURNED WHEN REQUESTED.

DRAWN: IRD DATE: 10/1/10 DOOR NO: -  
CHECKED: - DATE: - DRAWING NO: -  
SCALE: 1" = 1'-0"  
SHEET 1 OF 1 ORDER NO: REFERENCE

**FLOOR KEEPER #3804122G**  
**HEEL AND DUST PROOF**

NOT TO SCALE

SET SLEEVE WITH GROUT IN MASONRY FLOOR

INSTRUCTIONS:  
USE KEY OR COIN TO LOCK OR UNLOCK FLOOR KEEPER.

DATE	LOC. KEY	DESCRIPTION	BY		
REVISIONS					
WE ASSUME NO RESPONSIBILITY AS TO MEASUREMENTS OR DETAILS AFFECTING ANY WORK BUT OUR OWN AND ARE NOT RESPONSIBLE FOR ANY ERRORS OCCURRING THRU THE USE OF THIS DRAWING BY OTHER PARTIES.					
PRINTS ISSUED					
NO.	KEY	DATE	NO.	KEY	DATE
KEY EXPLANATION					
AP - APPROVAL	ER - ERECTION				
FA - FINAL APPROVAL	RT - REQUEST				
DR - DISTRIBUTION	R.R. - REPR. REFERENCE				
S.L. - SHOP INSPECTION					